

PRODUCT DESCRIPTION:

National Standard offers a variety of packaging options to meet the needs of today's welding applications. Whether you are looking for individual spools or operating hundreds of robots in a production environment, National Standard has a package available that will maximize your productivity, reduce downtimes associated with change-outs and provide pay-off systems that produce quality welds. Our flexibility in packaging insures that your NS Premium Welding Wire purchase is tailored to your needs.

NS PREMIUM WELDING WIRE CHARACTERISTICS:

National Standard offers CopperFree™ and NS Plus™ Premium Copper-Coated carbon steel welding wires, Satin Glide™ stainless steel and silicon bronze welding wires and Tru-Core™ flux cored and metal cored welding wires. This provides the ultimate in flexibility to support your GMAW operations.

Our Tru-Trac® wood reels provide:

- "Twistfree" wire let-off from our stationary tight wound reel requiring only a few ounces of drag from up to 150' distance from the wire feeder.
- Maximizing productivity and lowering your welding costs are the primary benefits of our Tru-Trac® offering.
- Snag-free operations without drive roll overload delivers precise joint tracking
- Wire maintains a 35" to 55" cast
- Smaller dispersion pattern than barrel drum packages

Our Drum Pack packages offer:

- Packaged in a loose coil form
- Wire takes on a large sine wave or "S" shape
- Wire let-off system provides smooth feeding

Our Smart Pak® packages offer:

- Packaged in a loose coil form
- Wire takes on a large sine wave or "S" shape
- Wire let-off system provides smooth feeding
- Multiple engineered wire dispensing solutions
- 100% recyclable
- Lifting strap for easy transport

Our Spool/Basket packages offer:

- Fiber spools with random layer wind
- Wire Baskets with precision layer level wind
- Manufactured according to ISO9001:2008 quality standards

PACKAGE OPTIONS:

PACKAGE	DESCRIPTION
30# FIBER SPOOL	Random Layer Wound (Satin-Glide™ only), 32 per pallet
33# FIBER SPOOL	Random Layer Wound, 72 per pallet
33# WIRE BASKET	Precision Layer Level Wound (NS Plus™ only), 72 per pallet
45# FIBER SPOOL	Random Layer Wound, 72 per pallet
45# WIRE BASKET	Precision Layer Level Wound (NS Plus™ only), 72 per pallet
50# FIBER SPOOL	Random Layer Wound (Tru-Core™ only), 32 per pallet
60# FIBER SPOOL	Random Layer Wound, 54 per pallet
60# COIL	Coil, Random Layer Wound, 32 per pallet
250# FIBER DRUM	1, 2, 4 per pallet
500# FIBER DRUM	1, 2, 4 per pallet
600# FIBER DRUM	1 per pallet (Tru-Core™ only)
900# - 1000# FIBER DRUM	1 per pallet
250# SMART PAK®	Corrugated Box, 1, 2, 4 per pallet
500# SMART PAK®	Corrugated Box, 1, 2, 4 per pallet
600# SMART PAK®	Corrugated Box, 1 per pallet (Tru-Core™ only)
1000# SMART PAK®	Corrugated Box, 1 per pallet
300# TRU-TRAC®	Wood Reel, 2 per pallet, self-palletized
425# TRIGGER TRAC®	Wood Reel, 4 per pallet, self-palletized
600# TRU-TRAC®	Wood Reel, 2 per pallet, self-palletized
1000# TRU-TRAC®	Wood Reel, 2 per pallet, self-palletized
600# WOOD REEL	Wood Reel, 2 per pallet, self-palletized (Tru-Core™ only)
1000# WOOD REEL	Wood Reel, 2 per pallet, self-palletized
For specific diameter/alloy/package combinations, please consult the appropriate technical bulletin or contact customer service at 1-800-777-1618.	
Purchase of full pallet quantities is not required.	

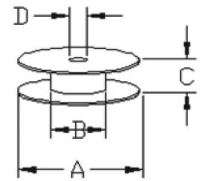
PREMIUM PACKAGING OPTIONS



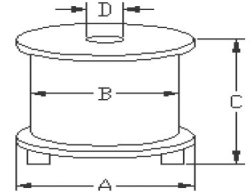
SPOOL/BASKET PACKAGE DIMENSIONS:

WEIGHT	PACKAGE TYPE	FLANGE OD A	CORE ID B	HEIGHT C	ARBOR HOLE D
30 lb. (13.6 Kg.)	Fiber Spool	11-3/4" (299 mm)	8-1/4" (210 mm)	4" (102 mm)	2-1/32" (52 mm)
33 lb. (15 Kg.)	Fiber Spool Wire Basket	11-3/4" (299 mm)	8-1/4" (210 mm)	4" (102 mm)	2-1/32" (52 mm)
45 lb. (20 Kg.)	Fiber Spool Wire Basket	11-3/4" (299 mm)	6-3/8" (162 mm)	4" (102 mm)	2-1/32" (52 mm)
50 lb. (23 Kg.)	Fiber Spool	11-3/4" (299 mm)	6-3/8" (162 mm)	4" (102 mm)	2-1/32" (52 mm)
60 lb. (27 Kg.)	Fiber Spool	13-7/8" (352 mm)	8-14" (210 mm)	4" (102 mm)	2-1/32" (52 mm)
60 lb. (27 Kg.)	Coil	n/a	12" (304 mm)	4" (102 mm)	n/a

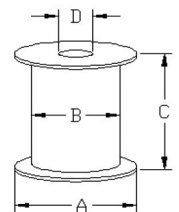
30/33/45/60# Spools



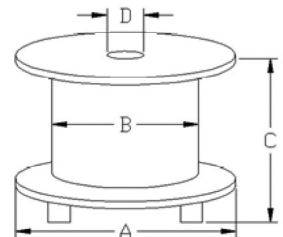
300# Tru-Trac®



4-2-5 Trigger Trac™



600# & 1,000# Tru-Trac®



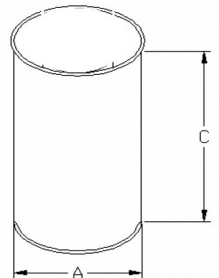
TRU-TRAC® AND REEL PACKAGE DIMENSIONS:

WEIGHT	PACKAGE TYPE	PACKAGE MATERIAL	FLANGE OD A	CORE ID B	HEIGHT C	ARBOR HOLE D
300 lb. (136 Kg.)	Tru-Trac®	Wood	24" (610 mm)	20" (508 mm)	21" (533 mm)	5" (127 mm)
425 lb. (193 Kg.)	Trigger Trac®	Wood	18-3/4" (299 mm)	12-15/16" (329 mm)	18" (457 mm)	5" (127 mm)
600 lb. (272 Kg.)	Tru-Trac®	Wood	30" (762 mm)	20" (508 mm)	22" (559 mm)	5" (127 mm)
600 lb. (272 Kg.)	Wood reel	Wood	30" (762 mm)	14" (356 mm)	17" (432 mm)	5" (127 mm)
1,000 lb. (455 Kg.)	Tru-Trac®	Wood	30" (762 mm)	20" (508 mm)	22" (559 mm)	5" (127 mm)
1,000 lb. (455 Kg.)	Wood reel	Wood	30" (762 mm)	14" (356 mm)	17" (432 mm)	5" (127 mm)

DRUM PACK PACKAGE DIMENSIONS:

WEIGHT	PACKAGE TYPE	FOOTPRINT A	HEIGHT C
250 lb. (113 Kg.)	Fiber Drum	20.4" (518 mm)	16" (406 mm)
500 lb. (227 Kg.)	Fiber Drum	20.4" (518 mm)	31.25" (794 mm)
600 lb. (272 Kg.)	Fiber Drum	23.4" (594 mm)	31.25" (794 mm)
900 lb. (400 Kg.)	Fiber Drum	23.4" (594 mm)	31.25" (794 mm)
1000 lb. (455 Kg.)	Fiber Drum	23.4" (594 mm)	31.25" (794 mm)

Drums



SMART PAK® PACKAGE DIMENSIONS:

WEIGHT	PACKAGE TYPE	FOOTPRINT A	HEIGHT C
250 lb. (113 Kg.)	Corrugated Box	21" x 21" (533 mm x 533 mm)	16" (406 mm)
500 lb. (227 Kg.)	Corrugated Box	21" x 21" (533 mm x 533 mm)	32" (813 mm)
600 lb. (272 Kg.)	Corrugated Box	24" x 24" (610 mm x 610 mm)	32" (813 mm)
1000 lb. (455 Kg.)	Corrugated Box	24" x 24" (610 mm x 610 mm)	32" (813 mm)

Smart Pak®

